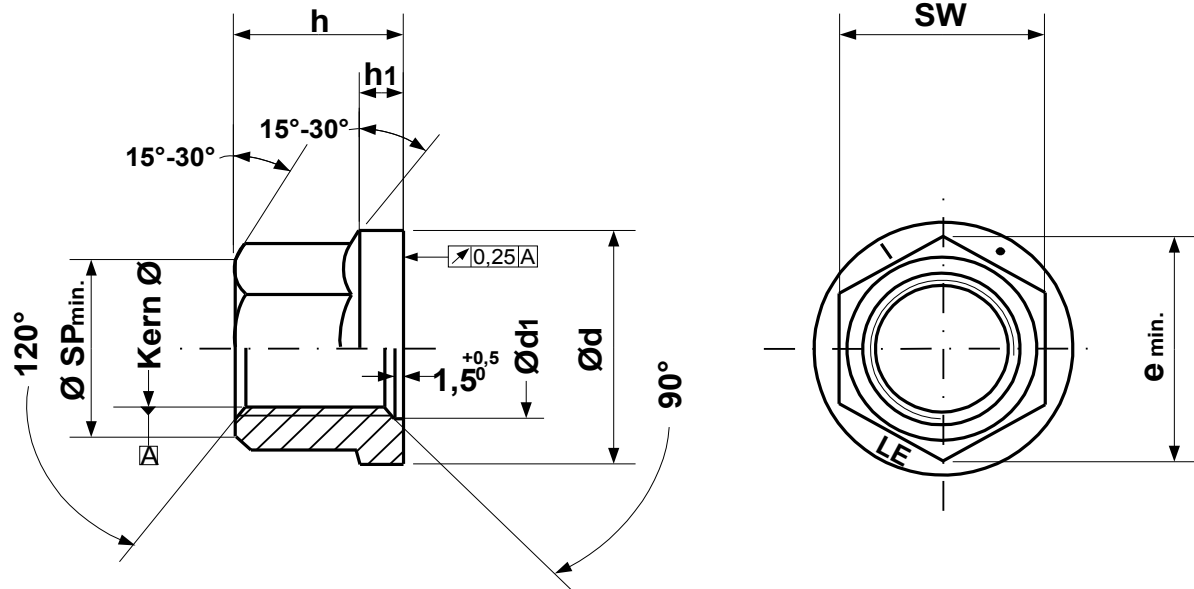


Flachbundmutter DIN 74 361 Form B



Sorte	SW	h	h1	Kern \varnothing	$\varnothing d$	$\varnothing d_1$	$\varnothing \text{ SP}^{\text{min.}}$	$e^{\text{min.}}$	Einsatzg.
									Fertigg.
M 14x1,5	19,00	16,0	3,5	12,676	27,0	14,77	17,4	21,10	37,0 g
	18,67	15,0	2,5	12,376	26,5	14,50			29,0 g
M 18x1,5	24,00	19,0	4,5	16,676	29,0	18,83	22,5	26,51	34,0 g
	23,67	18,0	3,5	16,376	28,5	18,50			44,0 g
M 20x1,5	27,00	21,0	5,5	18,676	34,0	20,83	24,9	29,87	76,0 g
	26,67	20,0	4,5	18,376	33,5	20,50			63,0 g
M 22x1,5	30,00	23,0	6,5	20,676	36,0	22,83	27,7	33,23	97,0 g
	29,67	22,0	5,5	20,376	35,5	22,50			82,0 g